

BLOCK ALPHABET LETTERS.

Lesson by Vanessa Page
Copyright Augachel Pty Ltd - 2002

First if you haven't got a drawing program you can download Zoner Draw 3 for Free from here: <http://www.zoner.com>

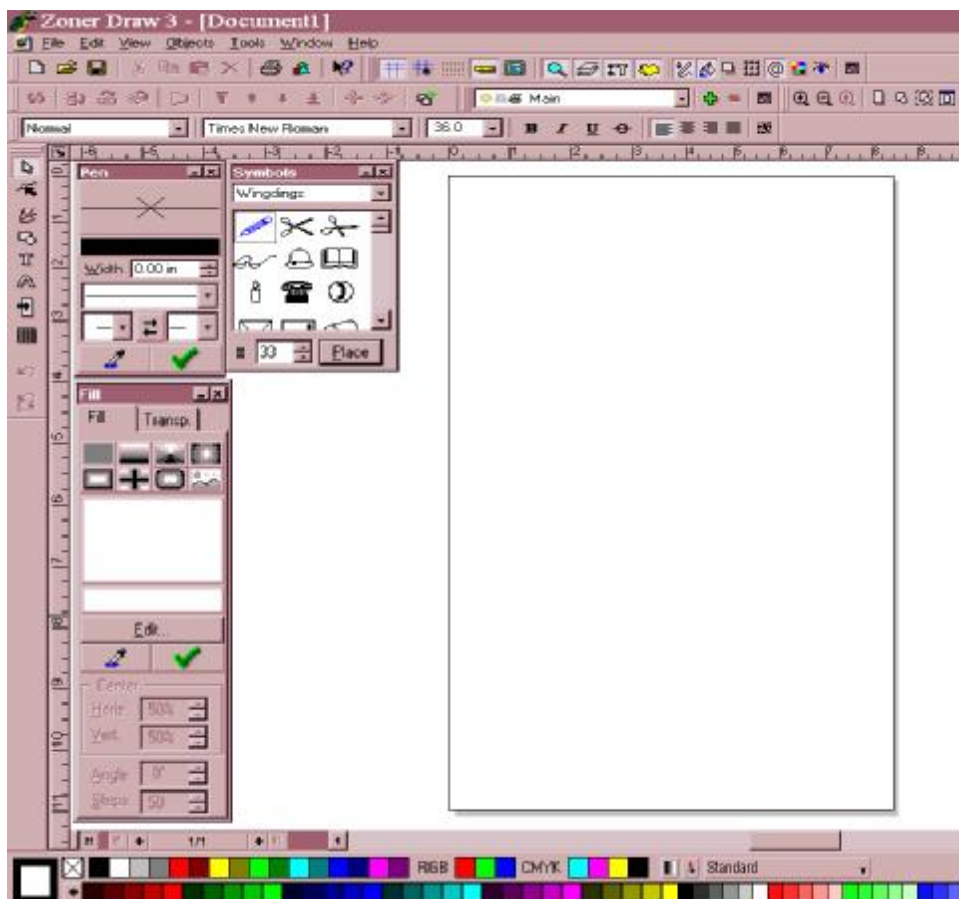
Open Zoner and make sure you have these pallettes open.

Fill

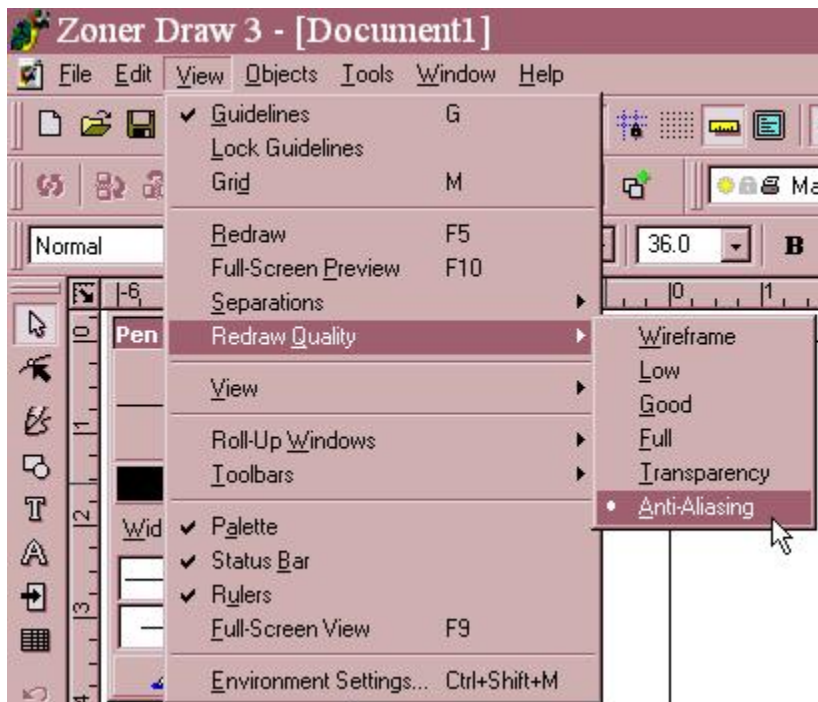
Pen

Symbols

If these aren't showing then go to View - Roll-up Windows and select them.

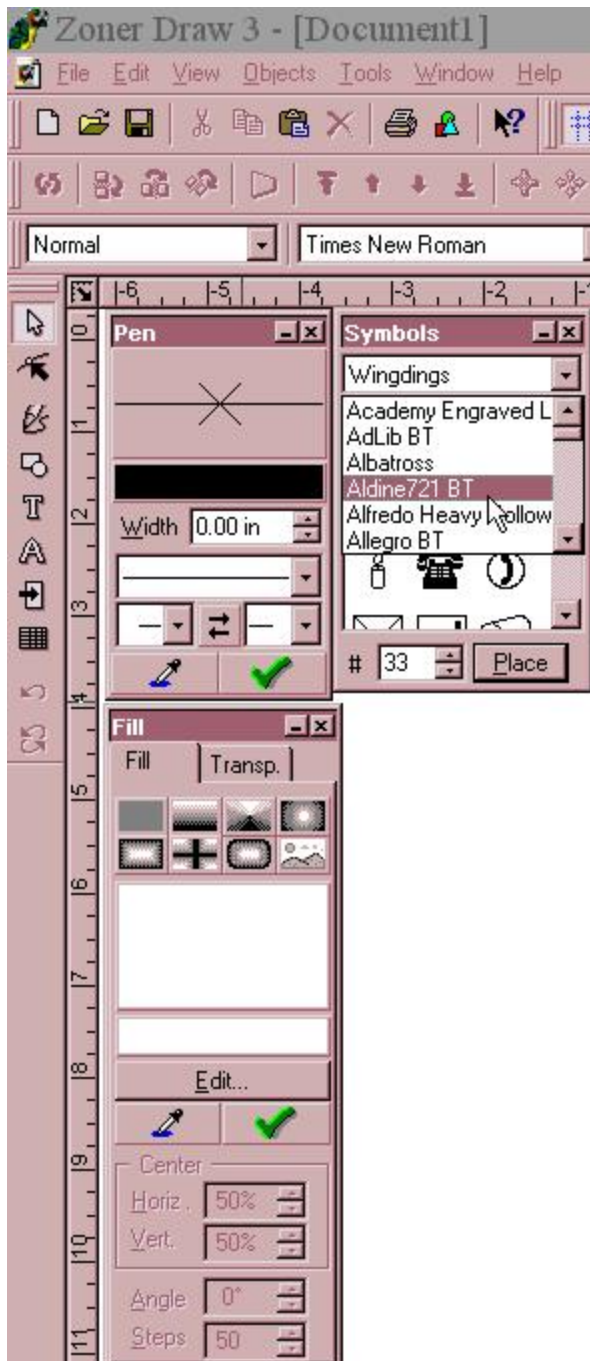


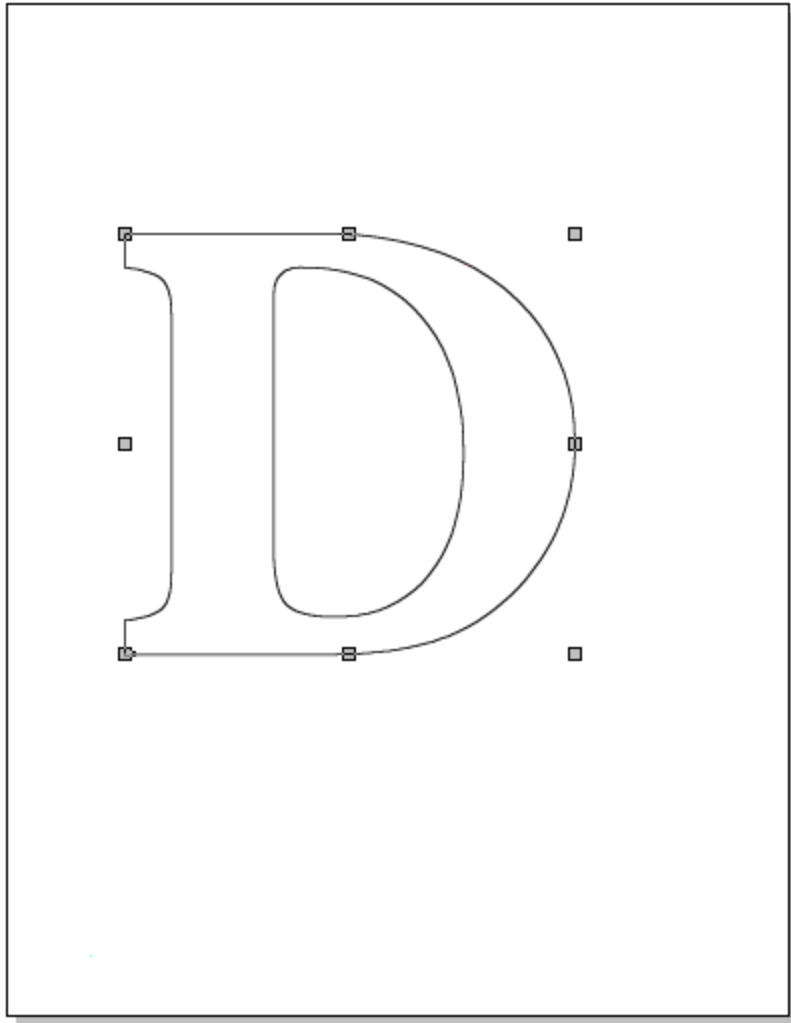
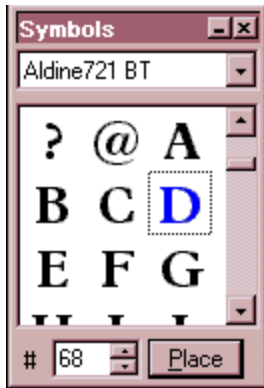
Also select View-Re - draw quality - Anti-Aliasing



I have also moved some of the menus from the right hand side to the top of the screen, You can just drag and drop them.

**On the symbols palette select a font, I chose Aldine 721 BT.
I placed the mouse cursor on the 'D' and dragged it to the work area.**





You can change the size of the font by dragging the corners.

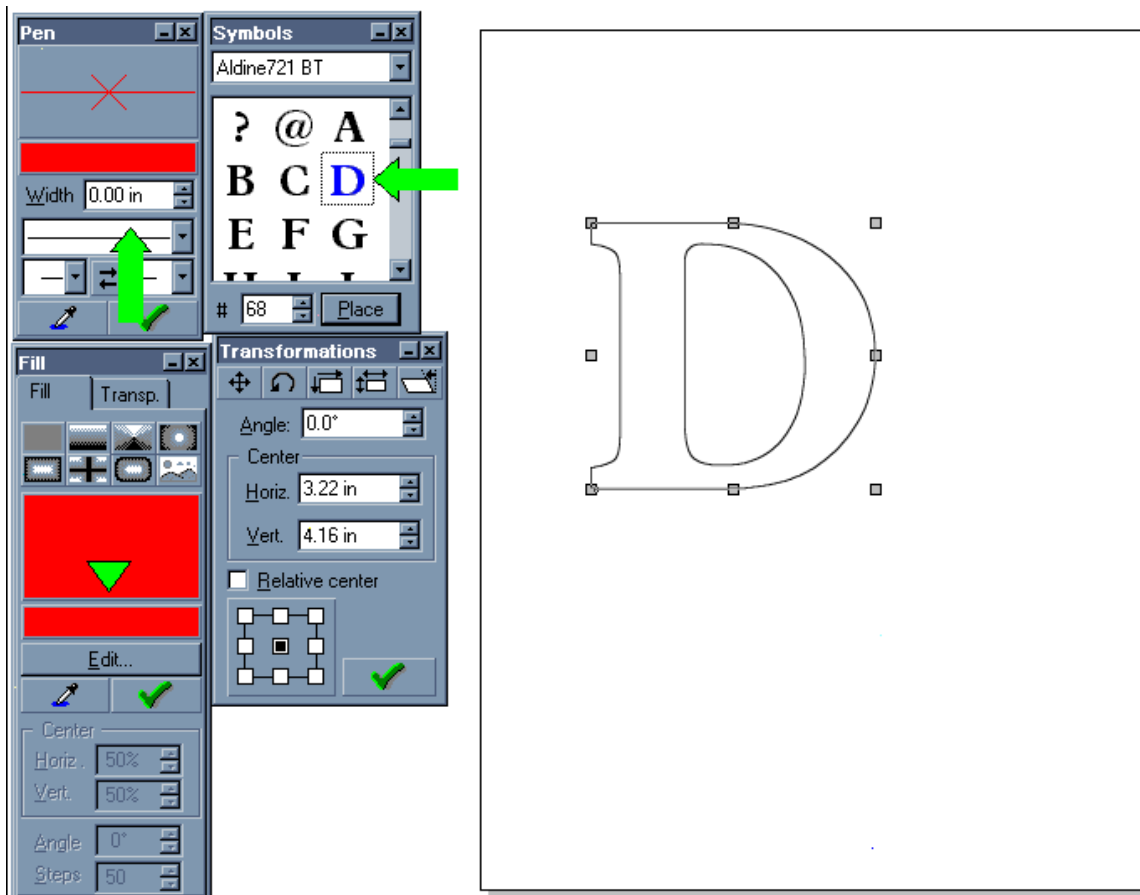
On the Pen palette select:

Red

Width - 0.00in

Straight Line

No arrow heads.

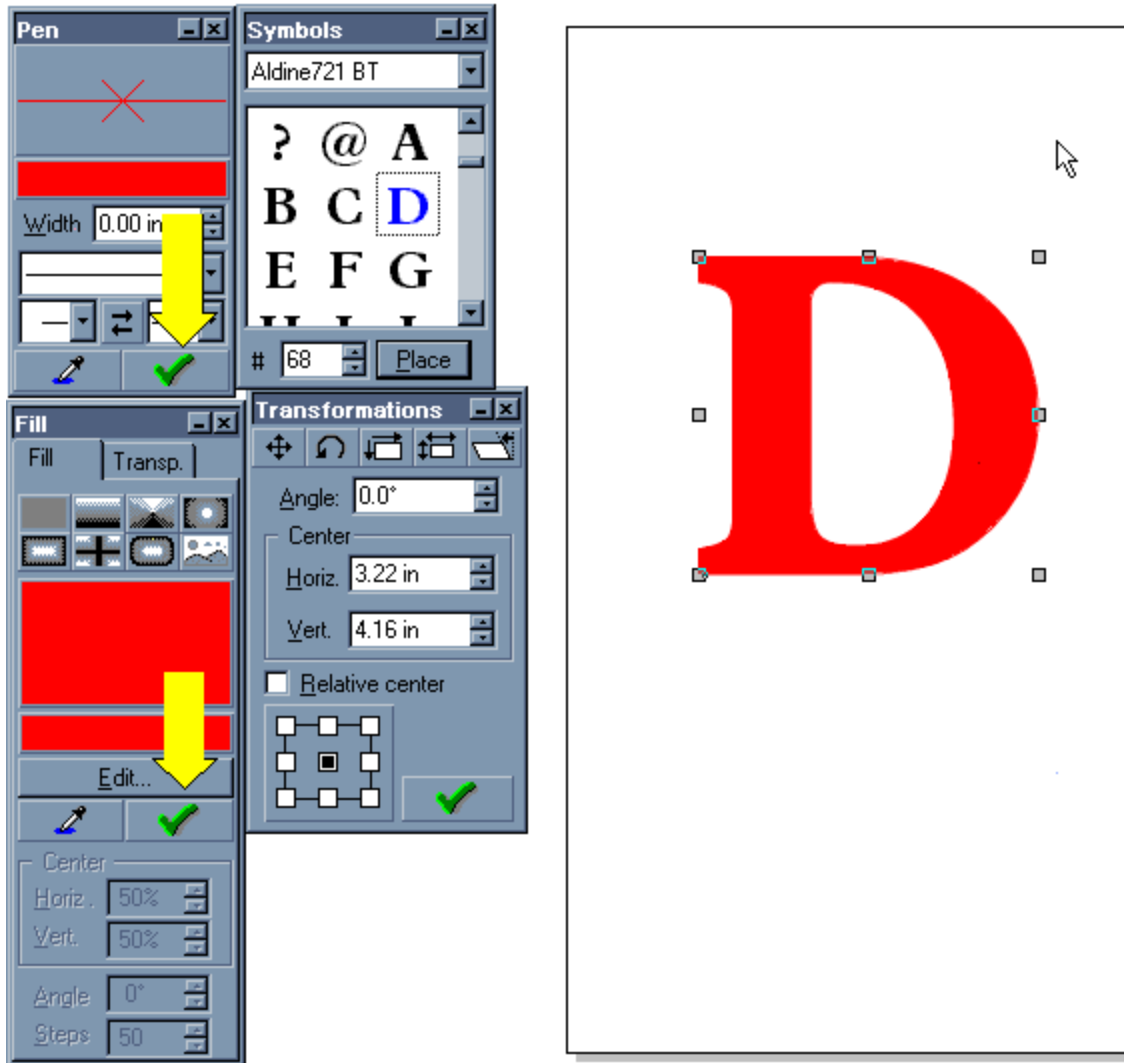


If the 'D' is filled in you need to re-fill with red.

On the Fill palette select:

Red and select the 'D' and click the check mark, the 'D' will fill with the red colour.

Next we want the outline to be the same colour as the Fill. Whilst the 'D' is selected click on the Outline (Pen) check mark and the outline will be the same colour as the inside fill.



Save the 'D' as a .wmf file.

You can use this technique for any of the Fonts you have in the Windows Font folder.

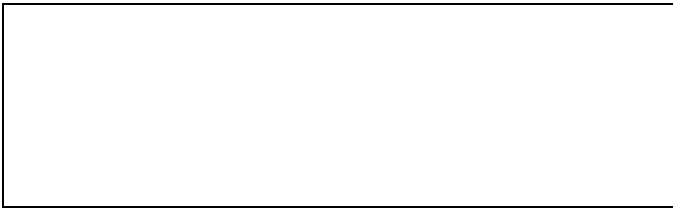
If you want to have a shadow font just click on Control+D on your keyboard and another 'D' will appear slightly to the right and down a fraction.

Change the colour of this second letter so the machine will stitch out in 2 colours.

4



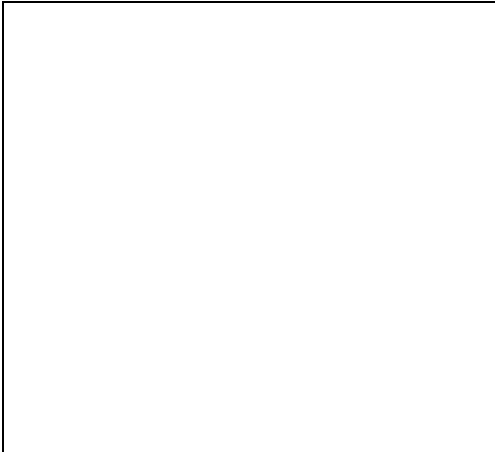
With the last 'D' selected, hit the key at the top of the screen that moves the top 'D' behind the other 'D' (the arrow key with a line underneath it at the top of the screen). Now you can decide which way you want the 'D'



Using your left - right - up - down keys on your key board will nudge the 'D' to the right and up to get it in the position you need. You decide how much of a shadow you want.

When you have the 'D' in the correct position it looks like a blocked letter.

Select File - Export - BMP and select the folder you want to save it in.



Now all you need to do is open the Click N Stitch digitizing program and let the Wizard do the rest.



I used the same technique for the word 'Dad' I changed the size and I made the outline the same colour as the fill. If you wanted you could make the outline thicker and the word would have a Satin stitch outline.



Again I used the same technique for the number '0'. If you are using a large text then I suggest you select a fabric which digitizers with an underlay.

**Have fun.
Vanessa**